

The possibility of more time without your cancer growing or spreading

BRAFTOVI (encorafenib) + MEKTOVI (binimetinib) is a combination therapy for adults with BRAF+ (V600E or V600K) melanoma that has spread (metastatic) or that cannot be removed by surgery (unresectable). BRAFTOVI should not be used to treat people with wild-type BRAF melanoma.

In a clinical trial, BRAFTOVI + MEKTOVI was compared with vemurafenib to measure the median* length of time people lived without their cancer growing, spreading, or getting worse.

People taking BRAFTOVI + MEKTOVI lived for a median of 14.9 months compared with a median of 7.3 months for people taking vemurafenib.

BRAFTOVI + MEKTOVI will not work for everyone. Results may vary.

*Median is defined as the middle number in a group of numbers arranged from lowest to highest.

Not actual patient.

SELECTED IMPORTANT SAFETY INFORMATION

BRAFTOVI (encorafenib) and MEKTOVI (binimetinib) may cause serious side effects, including:

- **Risk of new skin cancers.** BRAFTOVI, when used alone or with MEKTOVI, may cause skin cancers called cutaneous squamous cell carcinoma or basal cell carcinoma. Talk to your healthcare provider about your risk for these cancers.

Check your skin and tell your healthcare provider right away about any skin changes, including a:

- new wart
- skin sore or reddish bump that bleeds or does not heal
- change in size or color of a mole

Your healthcare provider should check your skin before treatment, every 2 months during treatment, and for up to 6 months after you stop treatment to look for any new skin cancers.

Your healthcare provider should also check for cancers that may not occur on the skin. Tell your healthcare provider about any new symptoms that develop during treatment.

Please see additional Important Safety Information on pages 17-19 and BRAFTOVI full Prescribing Information, including Medication Guide, and MEKTOVI full Prescribing Information, including Medication Guide, for additional information.

Learn how treatment with **BRAFTOVI + MEKTOVI** may help

This guide was designed to help you learn more about BRAF+ (V600E or V600K) metastatic melanoma, how BRAFTOVI (encorafenib) + MEKTOVI (binimetinib) may help, and possible serious and common side effects of this combination therapy.



Remember, this brochure is being provided for your information only and does not replace the medical advice of your doctor.

Be sure to consult your doctor regarding any questions or concerns you may have about your specific medical condition or treatment plan.

Selected Important Safety Information

- **Heart problems, including heart failure.** BRAFTOVI, when taken with MEKTOVI, can cause heart problems. Your healthcare provider will check your heart function before and during treatment. Tell your healthcare provider right away if you have any of the following signs and symptoms of a heart problem:
 - o feeling like your heart is pounding or racing
 - o shortness of breath
 - o swelling in your hands, ankles, legs, or feet
 - o feeling faint or light-headed

Please see additional Important Safety Information on pages 17-19 and BRAFTOVI full [Prescribing Information](#), including [Medication Guide](#), and MEKTOVI full [Prescribing Information](#), including [Medication Guide](#), for additional information.

UNDERSTANDING DIAGNOSIS..... 4-5

ABOUT BRAFTOVI + MEKTOVI..... 6-11

POSSIBLE SERIOUS AND COMMON SIDE EFFECTS..... 12-13

TAKING BRAFTOVI + MEKTOVI..... 14-16

IMPORTANT SAFETY INFORMATION AND INDICATION..... 17-19

FINANCIAL AND PERSONALIZED SUPPORT..... 21-22

SUPPORT FOR CAREGIVERS..... 23

What is BRAFTOVI + MEKTOVI?

BRAFTOVI and MEKTOVI are prescription medicines used together to treat adults with a type of skin cancer called melanoma:

- that has spread to other parts of the body or cannot be removed by surgery, **and**
- that has a certain type of abnormal “BRAF” gene


BRAFTOVI should not be used to treat people with wild-type BRAF melanoma. Your healthcare provider will perform a test to make sure that BRAFTOVI + MEKTOVI is right for you.

It is not known if BRAFTOVI or MEKTOVI is safe and effective in children.

Selected Important Safety Information

- **Liver problems.** BRAFTOVI, when taken with MEKTOVI, can cause liver problems. Your healthcare provider will perform blood tests to check your liver function before and during treatment. Tell your healthcare provider if you have any of the following signs and symptoms of a liver problem:
 - yellowing of your skin or your eyes
 - dark or brown (tea-colored) urine
 - nausea or vomiting
 - loss of appetite
 - tiredness
 - bruising
 - bleeding

Please see additional Important Safety Information on pages 17-19 and BRAFTOVI full Prescribing Information, including Medication Guide, and MEKTOVI full Prescribing Information, including Medication Guide, for additional information.



Not actual patient.

About melanoma

Melanoma is considered an aggressive type of skin cancer

It develops when healthy cells called melanocytes start to grow out of control. Melanocytes are the cells that give your skin its pigment, or color.

If your melanoma is metastatic, that means the cancer has spread to other parts of the body. If it's unresectable, that means the cancer cannot be removed by surgery.

Did you know? A specific characteristic called a “biomarker” can make someone’s melanoma different.

Please see Important Safety Information on pages 17-19 and BRAFTOVI (encorafenib) full Prescribing Information, including Medication Guide, and MEKTOVI (binimetinib) full Prescribing Information, including Medication Guide, for additional information.

What are biomarkers?

There are **certain characteristics that may be specific to someone's diagnosis**. One of these specific characteristics can be identified by something called a "biomarker," which can be found by testing tissue from the tumor or a sample of blood.

Biomarker testing may be used to help doctors know if the cancer has an abnormal gene that can cause cancer to grow and spread faster. **Knowing if your cancer has abnormal genes from biomarker testing can help your doctor recommend treatment options.**

One common biomarker is called BRAF



BRAF+

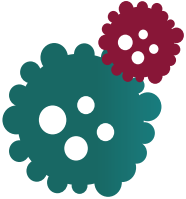
Of all people with metastatic melanoma, about half tested BRAF positive (BRAF+). This means the cancer has a certain type of abnormal BRAF (V600E or V600K) gene.

Selected Important Safety Information

- **Muscle problems (rhabdomyolysis).** MEKTOVI (binimetinib), when taken with BRAFTOVI (encorafenib), can cause muscle problems that can be severe. MEKTOVI may increase the level of an enzyme in your blood called creatine phosphokinase (CPK) and can be a sign of muscle damage. Your healthcare provider should perform a blood test to check your CPK levels before and during treatment. Tell your healthcare provider right away if you develop any of these symptoms:
 - weakness
 - muscle aches or pain
 - dark, reddish urine

Please see additional Important Safety Information on pages 17-19 and BRAFTOVI full [Prescribing Information](#), including [Medication Guide](#), and MEKTOVI full [Prescribing Information](#), including [Medication Guide](#), for additional information.

BRAFTOVI + MEKTOVI is a combination targeted therapy



BRAFTOVI (encorafenib) + MEKTOVI (binimetinib) is a targeted treatment, which works to target cancer cells with the BRAF+ (V600E or V600K) mutation. However, it may also affect healthy cells.

BRAFTOVI + MEKTOVI is a combination therapy for adults with BRAF+ (V600E or V600K) melanoma that has spread (metastatic) or that cannot be removed by surgery (unresectable).

BRAFTOVI should not be used to treat people with wild-type BRAF melanoma.

Selected Important Safety Information

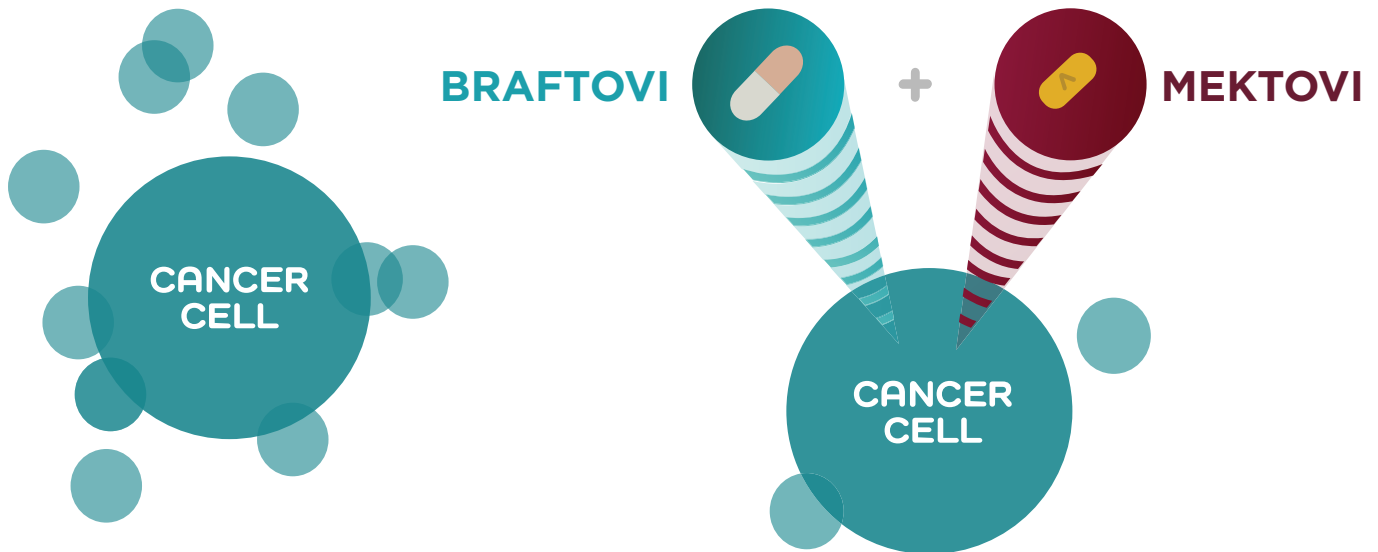
- **Bleeding problems.** BRAFTOVI, when taken with MEKTOVI, can cause serious bleeding problems, including in your stomach or brain, that can lead to death. Tell your healthcare provider and get medical help right away if you develop any signs of bleeding, including:
 - headaches, dizziness, or feeling weak
 - vomit blood or your vomit looks like “coffee grounds”
 - cough up blood or blood clots
 - red or black stools that look like tar

Please see additional Important Safety Information on pages 17-19 and BRAFTOVI full [Prescribing Information](#), including [Medication Guide](#), and MEKTOVI full [Prescribing Information](#), including [Medication Guide](#), for additional information.

BRAFTOVI + MEKTOVI is a combination targeted therapy (continued)

Here's how it works:

In BRAF+ (V600E or V600K) metastatic melanoma, signals are sent within the cancer cells, telling the cancer to grow and spread. BRAFTOVI + MEKTOVI targets those signals at different points within the cell to help slow the growth of cancer. However, it may also affect healthy cells.



Cancer cells multiply and the tumor may grow.

BRAFTOVI in combination with MEKTOVI targets signals that help slow the growth of cancer cells.

INDICATION AND USAGE

BRAFTOVI® (encorafenib) and MEKTOVI® (binimetinib) are kinase inhibitors indicated for use in combination for the treatment of patients with unresectable or metastatic melanoma with a BRAF V600E or V600K mutation, as detected by an FDA-approved test.

Limitations of Use: BRAFTOVI is not indicated for treatment of patients with wild-type BRAF melanoma.

Please see additional Important Safety Information on pages 17-19 and BRAFTOVI full [Prescribing Information](#), including [Medication Guide](#), and MEKTOVI full [Prescribing Information](#), including [Medication Guide](#), for additional information.

How BRAFTOVI + MEKTOVI may help

BRAFTOVI (encorafenib) + MEKTOVI (binimetinib) was studied in people who had BRAF+ (V600E or V600K, as determined by an FDA-approved test) melanoma that had spread or could not be removed by surgery. The primary measure in the trial was how long people with this type of melanoma lived without their cancer growing, spreading, or getting worse. Treatment continued until disease progression or development of unacceptable side effects.

Of those people who took part in the trial:

192

were given
BRAFTOVI + MEKTOVI

191

were given another treatment
called **vemurafenib**. This was the
control group of the trial

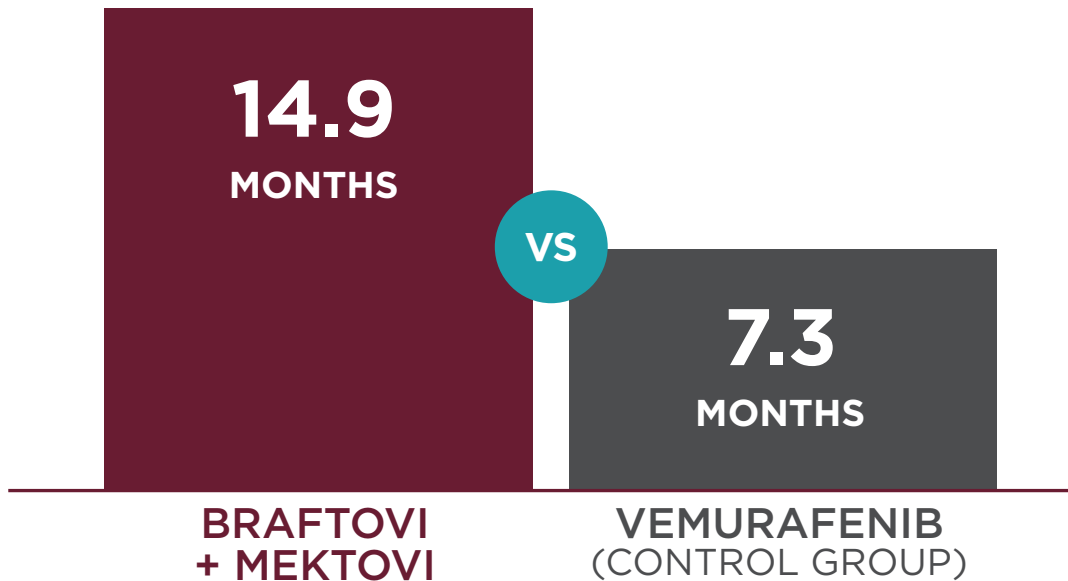
Selected Important Safety Information

- **Blood clots.** MEKTOVI, when taken with BRAFTOVI, can cause blood clots in your arms or legs, which can travel to your lungs and can lead to death. Get medical help right away if you have the following symptoms:
 - chest pain
 - sudden shortness of breath or trouble breathing
 - pain in your legs with or without swelling
 - swelling in your arms and legs
 - a cool, pale arm or leg

Please see additional Important Safety Information on pages 17-19 and BRAFTOVI full [Prescribing Information](#), including [Medication Guide](#), and MEKTOVI full [Prescribing Information](#), including [Medication Guide](#), for additional information.

| Effect on cancer progression

In this clinical trial, the median length of time people lived without their cancer growing, spreading, or getting worse was:



BRAFTOVI + MEKTOVI will not work for everyone. Individual results may vary.

Median is defined as the middle number in a group of numbers arranged from lowest to highest.

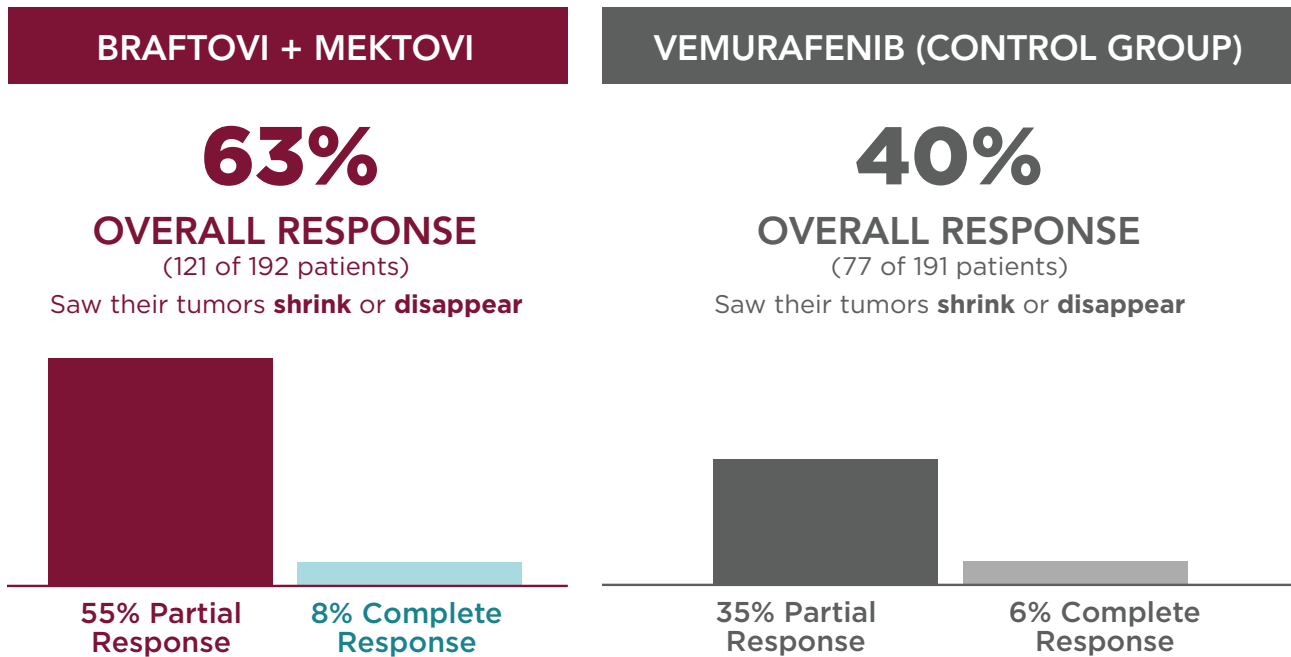
Selected Important Safety Information

- **Eye problems.** BRAFTOVI, when taken with MEKTOVI, can cause eye problems. Your healthcare provider should perform an eye exam regularly during treatment. Tell your healthcare provider right away if you develop any new or worsening symptoms of eye problems, including:
 - o blurred vision, loss of vision, or other vision changes
 - o see halos (blurred outline around objects)
 - o see colored dots
 - o eye pain, swelling, or redness

Please see additional Important Safety Information on pages 17-19 and BRAFTOVI full [Prescribing Information](#), including [Medication Guide](#), and MEKTOVI full [Prescribing Information](#), including [Medication Guide](#), for additional information.

How BRAFTOVI + MEKTOVI may help (continued)

Some people saw their tumors shrink or even disappear



Tumors shrink, or “partial response,” means that the amount of cancer in the body, or the size of the tumor, decreased after treatment.

Tumors disappear, or “complete response,” means that all signs of cancer were gone after treatment. This doesn’t mean that the cancer was cured.

Overall response rate is the percentage of patients whose cancer shrinks or disappears after treatment.

BRAFTOVI (encorafenib) + MEKTOVI (binimetinib) will not work for everyone. Individual results may vary.

Selected Important Safety Information

- **Changes in the electrical activity of your heart called QT prolongation.** QT prolongation can cause irregular heartbeats that can be life-threatening. Your healthcare provider should do tests before you start taking BRAFTOVI with MEKTOVI and during your treatment to check your body salts (electrolytes). Tell your healthcare provider right away if you feel faint, light-headed, dizzy, or if you feel your heart beating irregularly or fast during treatment with BRAFTOVI and MEKTOVI. These symptoms may be related to QT prolongation

Please see additional Important Safety Information on pages 17-19 and BRAFTOVI full [Prescribing Information](#), including [Medication Guide](#), and MEKTOVI full [Prescribing Information](#), including [Medication Guide](#), for additional information.



Not actual patients.

Please see Important Safety Information on pages 17-19 and BRAFTOVI (encorafenib) full Prescribing Information, including Medication Guide, and MEKTOVI (binimetinib) full Prescribing Information, including Medication Guide, for additional information.

Learn about possible serious side effects

Each person responds differently to treatment, so make sure to talk to your doctor about how you're feeling. This is a summary of important risk information about BRAFTOVI (encorafenib) + MEKTOVI (binimetinib). **If you have any of these symptoms while taking BRAFTOVI + MEKTOVI, call your doctor immediately.** Your healthcare provider may change your dose, temporarily stop, or permanently stop treatment with BRAFTOVI and MEKTOVI if you have certain side effects.

Risk of new skin cancers	Symptoms included new warts; skin sores or reddish bumps that bleed or do not heal; change in size or color of a mole.
Heart problems, including heart failure	Symptoms included feeling like your heart is pounding or racing; shortness of breath; swelling in your hands, ankles, legs, or feet; feeling faint or light-headed.
Liver problems	Symptoms included yellowing of your skin or your eyes; dark or brown (tea-colored) urine; nausea or vomiting; loss of appetite; tiredness; bruising; bleeding.
Muscle problems (rhabdomyolysis)	Symptoms included weakness; muscle aches or pain; dark, reddish urine.
Bleeding problems	Can lead to death. Symptoms included headaches, dizziness, or feeling weak; coughing up blood or blood clots; vomiting blood or your vomit looks like "coffee grounds"; red or black stools that look like tar.
Blood clots	Can lead to death. Symptoms included chest pain; sudden shortness of breath or trouble breathing; pain in your legs with or without swelling; swelling in your arms and legs; a cool, pale arm or leg.
Eye problems	Symptoms included blurred vision, loss of vision, or other vision changes; seeing colored dots; seeing halos (blurred outline around objects); eye pain, swelling, or redness.
Changes in the electrical activity of your heart (QT prolongation)	Can be life-threatening. Symptoms included feeling faint, light-headed, dizzy, or if you feel your heart beating irregularly or fast.
Lung and breathing problems	Symptoms included shortness of breath and cough.
Risk of harm to unborn babies	Tell your doctor if you are pregnant or plan to become pregnant. BRAFTOVI and MEKTOVI can harm your unborn baby.

These are not all of the possible side effects of BRAFTOVI and MEKTOVI. Call your doctor for medical advice about side effects. You may report side effects to the FDA at **1-800-FDA-1088** or visit www.fda.gov/medwatch. You may also report side effects to Pfizer Inc. at **1-800-438-1985**.

Please see additional Important Safety Information on pages 17-19 and BRAFTOVI full Prescribing Information, including Medication Guide, and MEKTOVI full Prescribing Information, including Medication Guide, for additional information.

The most common side effects

In this section, you will find the most common side effects that people experienced in the clinical trial. **Remember, the information below does not replace directions from your doctor. Always talk to your doctor about side effects and ways you may be able to manage them.** Your doctor may change your dose or stop treatment temporarily or completely. Before taking any medicines, speak with your doctor.

FATIGUE | Talk to your doctor if you experience fatigue (tiredness or lack of energy). They may recommend daily exercise or other activities that may help reduce fatigue.

NAUSEA | Nausea may be worse if your stomach is empty, so discuss your eating habits with your doctor. They may also suggest an anti-nausea medicine.

DIARRHEA | Your doctor may suggest you take over-the-counter anti-diarrheal medicine to help, but it's also always important to stay hydrated. Sports drinks are often recommended, as they can help replace electrolytes and salts. Report diarrhea to your doctor right away.

VOMITING | It's important to stay hydrated throughout treatment. Talk to your doctor about liquids and over-the-counter medicines that may help. Fruit juices, ginger ale, water, and sports drinks are often recommended, as they can help prevent dehydration.

STOMACH-AREA (ABDOMINAL) PAIN | Talk to your doctor about your eating habits and how you can make adjustments. They may suggest avoiding foods that commonly cause abdominal pain and eating smaller meals throughout the day.

PAIN OR SWELLING OF YOUR JOINTS | Your doctor may recommend physical therapy or medicine to reduce swelling and inflammation. They may also suggest light stretching and hot or cold compresses to help reduce joint pain.




These are not all of the possible side effects of BRAFTOVI (encorafenib) and MEKTOVI (binimetinib). Call your doctor for medical advice about side effects. You may report side effects to the FDA at **1-800-FDA-1088** or visit www.fda.gov/medwatch. You may also report side effects to Pfizer Inc. at **1-800-438-1985**.

Taking BRAFTOVI + MEKTOVI

BRAFTOVI (encorafenib) is an oral medicine taken one time per day. MEKTOVI (binimetinib) is taken two times per day. Take BRAFTOVI at the same time each day with **either the morning or evening dose** of MEKTOVI.

BRAFTOVI

ONCE DAILY 

Six (75-mg) BRAFTOVI capsules

MEKTOVI

1ST DOSE 

Three (15-mg) MEKTOVI tablets

About
12 HOURS
after the first dose



2ND DOSE 

Three (15-mg) MEKTOVI tablets



Do not change your dose or stop taking either medicine unless your doctor tells you to. If you develop certain side effects, your doctor may change your dose, temporarily stop, or completely stop your treatment with either medicine.



If you stop treatment with BRAFTOVI, talk to your doctor about whether your MEKTOVI treatment may need to be stopped.



If you stop treatment with MEKTOVI, talk to your doctor about your BRAFTOVI treatment. Your BRAFTOVI dose may need to be changed or stopped.

Selected Important Safety Information

- **Lung or breathing problems.** MEKTOVI, when taken with BRAFTOVI, can cause lung or breathing problems. Tell your healthcare provider if you have any new or worsening symptoms of lung or breathing problems, including:
 - shortness of breath
 - cough

Please see additional Important Safety Information on pages 17-19 and BRAFTOVI full [Prescribing Information](#), including [Medication Guide](#), and MEKTOVI full [Prescribing Information](#), including [Medication Guide](#), for additional information.

Taking BRAFTOVI + MEKTOVI (continued)

What to do if you miss a dose

IF YOU MISS A DOSE OF BRAFTOVI

Take your dose as soon as you remember. If it is within 12 hours of your next scheduled dose, take your next dose at your regular time. Do not make up for the missed dose.

IF YOU MISS A DOSE OF MEKTOVI

Take your dose as soon as you remember. If it is within 6 hours of your next scheduled dose, take your next dose at your regular time. Do not make up for the missed dose.



Do not take an extra dose if you vomit after taking your scheduled dose. Take your next dose at the regular time.

Selected Important Safety Information

- Your healthcare provider may change your dose, temporarily stop, or permanently stop treatment with BRAFTOVI (encorafenib) and MEKTOVI (binimetinib) if you have certain side effects.
- **Tell your healthcare team if you are pregnant or plan to become pregnant.** BRAFTOVI and MEKTOVI can harm your unborn baby.

Please see additional Important Safety Information on pages 17-19 and BRAFTOVI full [Prescribing Information](#), including [Medication Guide](#), and MEKTOVI full [Prescribing Information](#), including [Medication Guide](#), for additional information.

Taking BRAFTOVI + MEKTOVI (continued)

Important things to remember when taking BRAFTOVI + MEKTOVI

Tell your doctor about all the medicines you take, including prescription and over-the-counter medicines, vitamins, and herbal supplements. BRAFTOVI (encorafenib) and certain other medicines can affect each other, causing side effects or affecting how BRAFTOVI or other medicines work. When starting a new treatment, it can be helpful to make it part of your daily routine.



SET TREATMENT REMINDERS

Make it a habit by setting an alarm on your phone or watch to remind you to take your BRAFTOVI and MEKTOVI (binimetinib) at the same time every day.



TAKE WITH OR WITHOUT FOOD

Take BRAFTOVI and MEKTOVI with or without a meal or snack. **There is no need to fast.**



AVOID GRAPEFRUIT

Avoid consuming grapefruit when taking BRAFTOVI. Grapefruit products may increase the amount of BRAFTOVI in your body.



STORE IN A DRY PLACE

Store BRAFTOVI and MEKTOVI in their original bottles and in a dry place at room temperature. Keep the bottles closed tightly to protect them from moisture.



TAKE IT AT HOME OR ON THE GO

BRAFTOVI + MEKTOVI is not an infusion, and it does not need to be refrigerated. That means you can take it at home or on the go.

Selected Important Safety Information

- Females who are able to become pregnant should use effective non-hormonal birth control (contraception) during and for at least:
 - 2 weeks after the last dose of BRAFTOVI
 - 30 days after the last dose of MEKTOVI
- Birth control methods that contain hormones (such as birth control pills, injections, or transdermal systems) may not work as well during treatment with BRAFTOVI
- Your healthcare provider will do a pregnancy test before you start taking BRAFTOVI and MEKTOVI. Tell your healthcare provider right away if you become pregnant or think you might become pregnant during treatment

Please see additional Important Safety Information on pages 17-19 and BRAFTOVI full [Prescribing Information](#), including [Medication Guide](#), and MEKTOVI full [Prescribing Information](#), including [Medication Guide](#), for additional information.

Important Safety Information and Indication

What is the most important information I should know about BRAFTOVI and MEKTOVI?

BRAFTOVI (encorafenib) and MEKTOVI (binimetinib) may cause serious side effects, including:

- **Risk of new skin cancers.** BRAFTOVI, when used alone or with MEKTOVI, may cause skin cancers called cutaneous squamous cell carcinoma or basal cell carcinoma. Talk to your healthcare provider about your risk for these cancers.

Check your skin and tell your healthcare provider right away about any skin changes, including a:

- new wart
- skin sore or reddish bump that bleeds or does not heal
- change in size or color of a mole

Your healthcare provider should check your skin before treatment, every 2 months during treatment, and for up to 6 months after you stop treatment to look for any new skin cancers.

Your healthcare provider should also check for cancers that may not occur on the skin. Tell your healthcare provider about any new symptoms that develop during treatment.

- **Heart problems, including heart failure.** BRAFTOVI, when taken with MEKTOVI, can cause heart problems. Your healthcare provider will check your heart function before and during treatment. Tell your healthcare provider right away if you have any of the following signs and symptoms of a heart problem:
 - feeling like your heart is pounding or racing
 - shortness of breath
 - swelling in your hands, ankles, legs, or feet
 - feeling faint or light-headed
- **Liver problems.** BRAFTOVI, when taken with MEKTOVI, can cause liver problems. Your healthcare provider will perform blood tests

to check your liver function before and during treatment. Tell your healthcare provider if you have any of the following signs and symptoms of a liver problem:

- yellowing of your skin or your eyes
- dark or brown (tea-colored) urine
- nausea or vomiting
- loss of appetite
- tiredness
- bruising
- bleeding

- **Muscle problems (rhabdomyolysis).** MEKTOVI, when taken with BRAFTOVI, can cause muscle problems that can be severe. MEKTOVI may increase the level of an enzyme in your blood called creatine phosphokinase (CPK) and can be a sign of muscle damage. Your healthcare provider should perform a blood test to check your CPK levels before and during treatment. Tell your healthcare provider right away if you develop any of these symptoms:

- weakness
- muscle aches or pain
- dark, reddish urine

- **Bleeding problems.** BRAFTOVI, when taken with MEKTOVI, can cause serious bleeding problems, including in your stomach or brain, that can lead to death. Tell your healthcare provider and get medical help right away if you develop any signs of bleeding, including:

- headaches, dizziness, or feeling weak
- cough up blood or blood clots
- vomit blood or your vomit looks like “coffee grounds”
- red or black stools that look like tar

Please see additional Important Safety Information on pages 18-19 and BRAFTOVI full [Prescribing Information](#), including [Medication Guide](#), and MEKTOVI full [Prescribing Information](#), including [Medication Guide](#), for additional information.

Important Safety Information and Indication (continued)

- **Blood clots.** MEKTOVI, when taken with BRAFTOVI, can cause blood clots in your arms or legs, which can travel to your lungs and can lead to death. Get medical help right away if you have the following symptoms:

- chest pain
- sudden shortness of breath or trouble breathing
- pain in your legs with or without swelling
- swelling in your arms and legs
- a cool, pale arm or leg

- **Eye problems.** BRAFTOVI (encorafenib), when taken with MEKTOVI (binimetinib), can cause eye problems. Your healthcare provider should perform an eye exam regularly during treatment. Tell your healthcare provider right away if you develop any new or worsening symptoms of eye problems, including:

- blurred vision, loss of vision, or other vision changes
- see colored dots
- see halos (blurred outline around objects)
- eye pain, swelling, or redness

- **Changes in the electrical activity of your heart called QT prolongation.** QT prolongation can cause irregular heartbeats that can be life-threatening. Your healthcare provider should do tests before you start taking BRAFTOVI with MEKTOVI and during your treatment to check your body salts (electrolytes). Tell your healthcare provider right away if you feel faint, light-headed, dizzy, or if you feel your heart beating irregularly or fast during treatment with BRAFTOVI and MEKTOVI. These symptoms may be related to QT prolongation

- **Lung or breathing problems.** MEKTOVI, when taken with BRAFTOVI, can cause lung or

breathing problems. Tell your healthcare provider if you have any new or worsening symptoms of lung or breathing problems, including:

- shortness of breath
- cough

Your healthcare provider may change your dose, temporarily stop, or permanently stop treatment with BRAFTOVI and MEKTOVI if you have certain side effects.

Tell your healthcare team if you are pregnant or plan to become pregnant. BRAFTOVI and MEKTOVI can harm your unborn baby.

- Females who are able to become pregnant should use effective non-hormonal birth control (contraception) during and for at least:
 - 2 weeks after the last dose of BRAFTOVI
 - 30 days after the last dose of MEKTOVI
- Birth control methods that contain hormones (such as birth control pills, injections, or transdermal systems) may not work as well during treatment with BRAFTOVI
- Your healthcare provider will do a pregnancy test before you start taking BRAFTOVI and MEKTOVI. Tell your healthcare provider right away if you become pregnant or think you might become pregnant during treatment

Talk to your healthcare team if you are breastfeeding or plan to breastfeed. It is not known if either treatment passes into your breast milk. Do not breastfeed during treatment with BRAFTOVI and MEKTOVI and for:

- 2 weeks after the last dose of BRAFTOVI
- 3 days after the last dose of MEKTOVI

BRAFTOVI may cause fertility problems in males. Talk to your healthcare provider if this is a concern for you.

Please see additional Important Safety Information on pages 17 and 19 and BRAFTOVI full Prescribing Information, including Medication Guide, and MEKTOVI full Prescribing Information, including Medication Guide, for additional information.

Important Safety Information and Indication (continued)

The most common side effects of BRAFTOVI when taken with MEKTOVI include: fatigue, nausea, diarrhea, vomiting, stomach-area (abdominal) pain, and pain or swelling of your joints (arthralgia).

Before taking BRAFTOVI + MEKTOVI, tell your healthcare provider about all of your medical conditions, including if you:

- have had bleeding problems
- have eye problems
- have heart problems, including a condition called long QT syndrome
- have been told that you have low blood levels of potassium, calcium, or magnesium
- have liver or kidney problems
- have had blood clots
- have lung or breathing problems
- have any muscle problems
- have high blood pressure (hypertension)
- are pregnant or plan to become pregnant
- are breastfeeding or plan to breastfeed

Tell your healthcare provider about all the medicines you take, including prescription and over-the-counter medicines, vitamins, and herbal supplements. BRAFTOVI and certain other medicines can affect each other, causing side effects or affecting how BRAFTOVI or other medicines work. You should also avoid grapefruit products during treatment with BRAFTOVI.

These are not all of the possible side effects of BRAFTOVI and MEKTOVI. Call your doctor for medical advice about side effects. You may report side effects to FDA at **1-800-FDA-1088** or visit www.fda.gov/medwatch. You may also report side effects to Pfizer Inc. at **1-800-438-1985**.

What is BRAFTOVI + MEKTOVI?

BRAFTOVI and MEKTOVI are prescription medicines used together to treat adults with a type of skin cancer called melanoma:

- that has spread to other parts of the body or cannot be removed by surgery, **and**
- that has a certain type of abnormal “BRAF” gene

BRAFTOVI should not be used to treat people with wild-type BRAF melanoma. Your healthcare provider will perform a test to make sure that BRAFTOVI + MEKTOVI is right for you.

It is not known if BRAFTOVI or MEKTOVI is safe and effective in children.

INDICATION AND USAGE

BRAFTOVI® (encorafenib) and MEKTOVI® (binimetinib) are kinase inhibitors indicated for use in combination for the treatment of patients with unresectable or metastatic melanoma with a BRAF V600E or V600K mutation, as detected by an FDA-approved test.

Limitations of Use: BRAFTOVI is not indicated for treatment of patients with wild-type BRAF melanoma.

Please see additional Important Safety Information on pages 17-18 and BRAFTOVI full [Prescribing Information](#), including [Medication Guide](#), and MEKTOVI full [Prescribing Information](#), including [Medication Guide](#), for additional information.



Not actual patients.

When it comes to support, _____ _____ we're in this together

Find support options for your treatment.

Please see Important Safety Information on pages 17-19 and BRAFTOVI full [Prescribing Information](#), including [Medication Guide](#), and MEKTOVI full [Prescribing Information](#), including [Medication Guide](#), for additional information.

Financial assistance

Pfizer Oncology together™

If needed, we'll help you find financial assistance options for your prescribed BRAFTOVI (encorafenib) + MEKTOVI (binimetinib), regardless of your insurance coverage.

Commercially insured

Resources for eligible patients with commercial, private, employer, or state health insurance marketplace coverage:

- **Co-pay assistance:** Eligible, commercially insured patients may pay as little as \$0 per month for BRAFTOVI + MEKTOVI. Limits, terms, and conditions apply.* Patients may receive up to \$9,450 per product in savings annually. There are no income requirements, forms, or faxing to enroll

*Patients are not eligible to use this card if they are enrolled in a state or federally funded insurance program, including but not limited to Medicare, Medicaid, TRICARE, Veterans Affairs health care, a state prescription drug assistance program, or the Government Health Insurance Plan available in Puerto Rico. Patients may receive up to \$9,450 per product in savings annually. **The offer will be accepted only at participating pharmacies. This offer is not health insurance.** No membership fees apply. Pfizer reserves the right to rescind, revoke, or amend this offer without notice. For full Terms and Conditions, please see PfizerOncologyTogether.com/terms. For any questions, please call 1-877-744-5675, visit PfizerOncologyTogether.com/terms, or write: Pfizer Oncology Together Co-Pay Savings Program, 2250 Perimeter Park Drive, Suite 300, Morrisville, NC 27560.

Medicare/government insured

Help identifying resources for eligible patients with Medicare/Medicare Part D, Medicaid, or other government insurance plans who express a financial need:

- We can assist patients with searching for financial support from alternate funding resources, which may include financial assistance through Extra Help, a Medicare Part D Low-Income Subsidy (LIS) program
- If support from alternate funding resources or Medicare Extra Help is not available, Pfizer Oncology Together will see if patients are eligible for the Pfizer Patient Assistance Program,[†] which can provide prescribed Pfizer Oncology medicines for free

Uninsured

Help identifying resources for eligible patients without any form of healthcare coverage:

- We can check patient eligibility for Medicaid and help them understand how to apply
- Patients who do not qualify for Medicaid may receive free medicine through the Pfizer Patient Assistance Program. Patients must be eligible and reapply as needed

[†]The Pfizer Patient Assistance Program is a joint program of Pfizer Inc. and the Pfizer Patient Assistance Foundation™. Free medicines from Pfizer are provided through the Pfizer Patient Assistance Foundation™. The Pfizer Patient Assistance Foundation™ is a separate legal entity from Pfizer Inc. with distinct legal restrictions.



FOR SUPPORT

Call **1-877-744-5675** (Monday–Friday 8 AM–8 PM ET)

VISIT PfizerOncologyTogether.com

Please see Important Safety Information on pages 17-19 and BRAFTOVI full Prescribing Information, including Medication Guide, and MEKTOVI full Prescribing Information, including Medication Guide, for additional information.

It's important to ask questions

When you meet with your doctor, it's important that you discuss any questions or concerns you may have about your disease and treatment plan.

What should you ask your doctor about BRAFTOVI (encorafenib) + MEKTOVI (binimetinib)?

[Click here](#) to get a discussion guide for your next doctor appointment.



THIS IS **LIVING WITH CANCER**[™]



This Is Living With Cancer[™] is a free online resource developed by Pfizer Oncology for all people living with cancer, regardless of age, income, race, location, cancer type, or stage of disease. This comprehensive program is available to anyone in the United States, whether they're on a Pfizer treatment or not, with a growing focus on those facing challenges accessing care.

Visit [ThisIsLivingWithCancer.com](https://www.thisislivingwithcancer.com) to learn more

The free resources offered through **This Is Living With Cancer[™]** and **LivingWith[®]** are available to anyone living with cancer and their loved ones, and are not specific to BRAFTOVI + MEKTOVI.

Please see Important Safety Information on pages 17-19 and BRAFTOVI full [Prescribing Information](#), including [Medication Guide](#), and MEKTOVI full [Prescribing Information](#), including [Medication Guide](#), for additional information.

Support for caregivers

TAKING GOOD CARE MEANS CARING FOR YOURSELF, TOO

There are many ways to show care for your loved one, like providing emotional care and practical help in their time of need. But try to remember that doing your best means caring for yourself, too. Below are 4 ways to help you find a better balance.



Every day, set aside some time for yourself

Maybe it's the peace and quiet of reading a book, the fresh air you breathe while taking a walk, or the enjoyment you get from seeing a movie. Whatever it is, take time to recharge so you have the energy to take better care of your loved one.



Ask to adjust your work schedule

If you need to dedicate more time to your caregiving responsibilities, your employer may be able to adjust your work schedule or workload. Ask if your company has a family leave, elder care, or other employee benefit policy that can help.



Don't be afraid to delegate

When you feel overwhelmed, ask family, friends, neighbors, and even coworkers for help. Some people will say no, and that's okay. But many will say yes again and again. Think of tasks that may take time but don't require a lot of skill, such as laundry or grocery shopping.



Talk to other caregivers

It may feel like you're the only one in the world facing these challenges. But you're not alone. Through local support groups, you can connect with other people who share the same feelings and are experiencing similar struggles.

Selected Important Safety Information

- **Lung or breathing problems.** MEKTOVI, when taken with BRAFTOVI, can cause lung or breathing problems. Tell your healthcare provider if you have any new or worsening symptoms of lung or breathing problems, including:
 - shortness of breath
 - cough



BRAFTOVI



MEKTOVI



(encorafenib) 75 mg capsules

(binimetinib) 15 mg tablets



Not actual patients.

Please see Important Safety Information on pages 17-19 and BRAFTOVI full Prescribing Information, including Medication Guide, and MEKTOVI full Prescribing Information, including Medication Guide, for additional information.

For more information about treatment and support,
visit [BRAFTOVI.com/M](https://braftovi.com/M)



Please see Important Safety Information on pages 17-19 and BRAFTOVI full Prescribing Information, including Medication Guide, and MEKTOVI full Prescribing Information, including Medication Guide, for additional information.



BRAFTOVI® and MEKTOVI® are registered trademarks of Array BioPharma Inc. in the United States and various other countries.

© 2024 Pfizer Inc. All rights reserved. PP-BMK-USA-0782 January 2024